



SOHO PARK KROTOSZYN

A

BUDYNEK

35

LOKAL

4

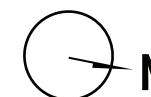
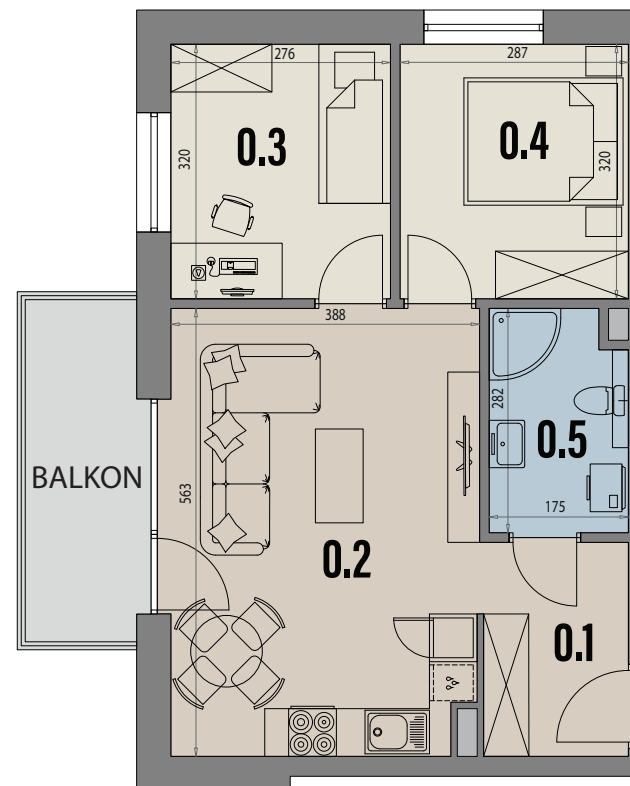
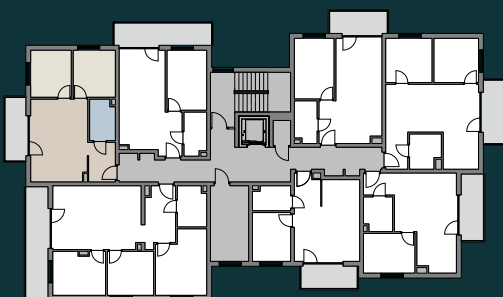
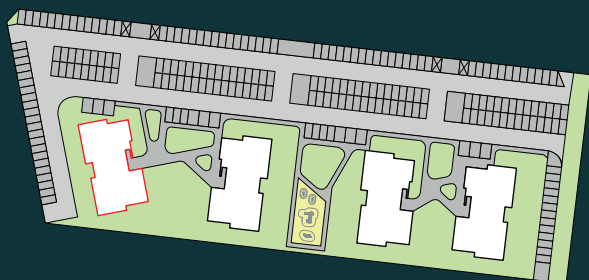
PIĘTRO

48,01 m²

POWIERZCHNIA UŻYTKOWA

6,75 m²

POWIERZCHNIA BALKONU



0.1	PRZEDPOKÓJ	4,72m ²
0.2	SALON Z ANEKSEM KUCH.	21,40m ²
0.3	POKÓJ	8,59m ²
0.4	POKÓJ	8,94m ²
0.5	ŁAZIENKA	4,36m ²